



# ITER

TECHNOLOGICAL INSTITUTE FOR THE RENEWABLE ENERGY



## CONTACT US

INSTITUTO TECNOLÓGICO Y DE  
ENERGÍAS RENOVABLES, S.A.

Polígono Industrial de Granadilla  
E38600 Granadilla de Abona  
S/C de Tenerife. España

Tel: +34 922 391000  
Fax: +34 922 391001

Email: [iter@iter.es](mailto:iter@iter.es) / [difusion@iter.es](mailto:difusion@iter.es)

[www.iter.es](http://www.iter.es)



### How to get here:

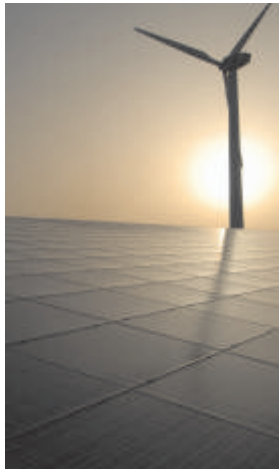
Autopista Sur - TF1, Km 52  
Desde Santa Cruz: salida 52 Acceso B  
Desde el Sur: salida 21 Acceso A

ITER was founded in the year 1990 by the Cabildo Insular of Tenerife, the island's local authority in order to contribute in the reduction of the island's outsider dependence on energy supply and to its regional development from a sustainable point of view.

From there on, the main action lines carried out by the Institute are:

- Electricity generation using renewable energies
- Promotion of Investigation and Development projects in the areas of
- Renewable Energies, Environment and Engineering.

## PROMOTING INVESTIGATION AND TECHNOLOGICAL DEVELOPMENT

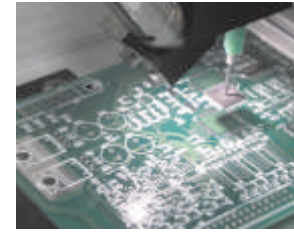


### RENEWABLE ENERGIES

- ✓ Installation and Management of Wind Farms
- ✓ Wind Tunnel Projects
- ✓ Energy production Forecasting
- ✓ Installation and Management of Photovoltaic Plants
- ✓ R + D Projects
- ✓ Adapted Technologies
- ✓ Rural Electrification
- ✓ PV module Factory

### KEY PROJECTS

- ♻ Projects and installation of Photovoltaic Plants in Tenerife (40 MW installed, year 2009)
- ♻ Development of a prototype of a Solar Plane
- ♻ Euro-Solar - 600 Renewable Energy installations in 8 South American counties
- ♻ HYRESS - Hybrid Renewable Energy Systems for the Supply of Services in Rural Settlements of Mediterranean Partner Countries
- ♻ Prompt warning systems facing the volcanic phenomena in Nicaragua, Philippines and Cabo Verde
- ♻ Network Access Point (NAP) Western Africa - Canary Islands



### ENGINEERING

- ✓ Applications and Website Development
- ✓ R+D Projects
- ✓ Information Technology Introduction
- ✓ Photovoltaic Plant Monitoring
- ✓ Design and Development of Inverters
- ✓ Domotic
- ✓ Control Centre of Electricity Generation

### BIOCLIMATISM

- ✓ 25 Bioclimatic Dwellings
- ✓ Renewable Energies in Buildings
- ✓ Optimization of Energy Consumption



### ENVIRONMENT

- ✓ Reduction of Volcanic Risks
- ✓ Underground Water Resources
- ✓ Environmental Quality
- ✓ Geothermal Exploration



### DIFFUSION AND TRAINING

- ✓ Dissemination - Education Facilities
- ✓ Renewable Energy Training
- ✓ Publications
- ✓ Open Doors Days
- ✓ Awareness Campaigns

